

1. Flowchart 1. Immediate management: decision algorithm in AMI

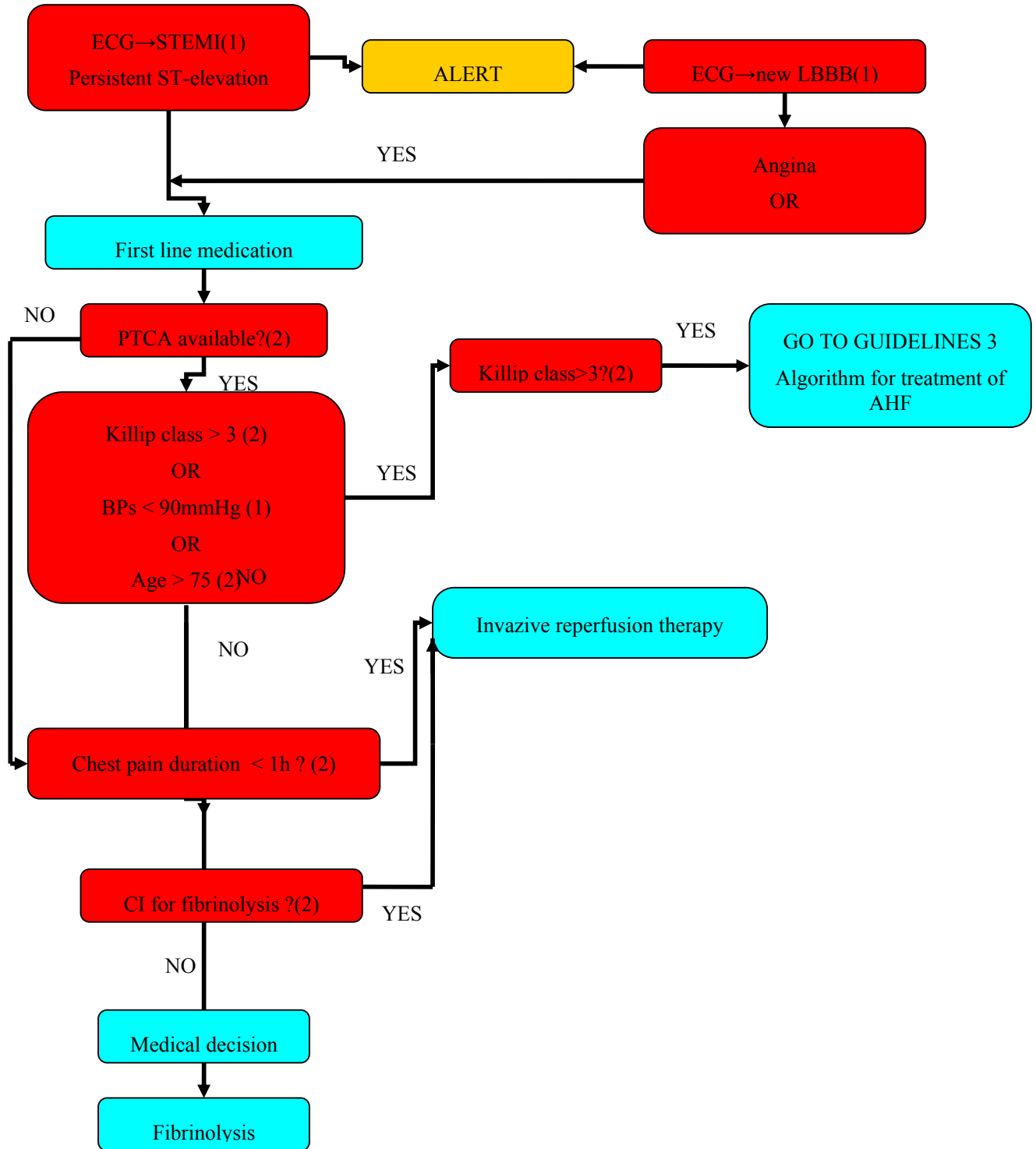


TABLE OF PARAMETERS 2

Input parameters	Output parameters
Flowchart 2	
<i>Coming from the sensors</i>	Aspirin recommendation
Angina	Clopidogrel recommendation
HR (bpm)	Oxygen recommendation
BP (mmHg) and trend	Send to NTG algorithm
SaO2 (%)	
<i>Coming from the EMR</i>	Send to beta-blocker algorithm
Angina OR heart failure	Morphine recommendation
Aspirin in the treatment before admission	
CI to aspirin	
Baseline ECG features: RV infarction	
Killip class (see F11)	
NYHA class of heart failure	
Claudication at rest or on exertion	
Anxiety	
History of asthma	
History of bronchial spasm	

Input from the sensors	1
Input from the EMR	2